

# MW15565G MIMO Wall Mount Antenna

Model: DV-6996/1727/1727-90/70/70-6/8-NK/36-2/140-1.8/1.5-W

## Features and Product Description

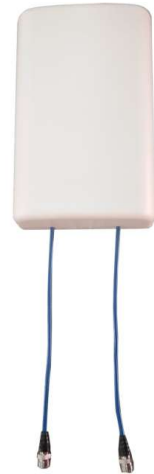
- Wideband, support 2G/3G/4G
- High gain
- RoHS compliant
- Low PIM
- High reliability

## Electrical Specifications

Port	Port1			Port2
Frequency range (MHz)	698 - 800	800-960	1710 - 2700	1710-2700
Polarization	Vertical			Horizontal
VSWR	≤ 1.8	≤ 1.5		≤ 1.5
Gain (dBi)	Approx.6		Approx.8	Approx. 8
Horizontal half-power beam width (°)	90 ± 15		70 ± 15	70 ± 15
Vertical half-power beam width (°)	65 ± 15		60 ± 15	60 ± 15
Front to Back Ratio (dB)	≥ 8		≥ 10	≥ 10
Isolation between port (dB)	≥ 25			
PIM, 3rd Order (dBc)	≤ -140 (2 x 33 dBm carrier)			
Average power, maximum (W)	50			
Impedance (Ω)	50			
Grounding	DC Ground			

## Mechanical Specifications

Dimensions (H x W x D) (mm)	284 x 180 x 66
Packing dimensions (H x W x D) (mm)	340 x 190 x 75
Net weight(with installation kit) (kg)	≤0.89
Packing weight (kg)	≤0.98
Radome material	UV ABS
Application	Indoor
Operating temperature (°C)	-40 to +60
Connector	N-Female connector with 25 ± 3cm jumper



## Installation Steps

1. Screw the antenna with installation board to the installation board on the wall.
2. Connect the cable to the antenna connector and tighten it.

